



SDG 11: SUSTAINABLE CITIES



Marketing
Gate

End extreme poverty. Fight inequality and injustice. Fix climate change. Whoa. The Global Goals are important, world-changing objectives that will require cooperation among governments, international organizations and world leaders. It seems impossible that the average person can make an impact. Should you just give up?

No! Change starts with you!

On 1 January 2016, the 17 Sustainable Development Goals (SDGs) of the 2030 Agenda for Sustainable Development — adopted by world leaders in September 2015 at an historic UN Summit — officially came into force.



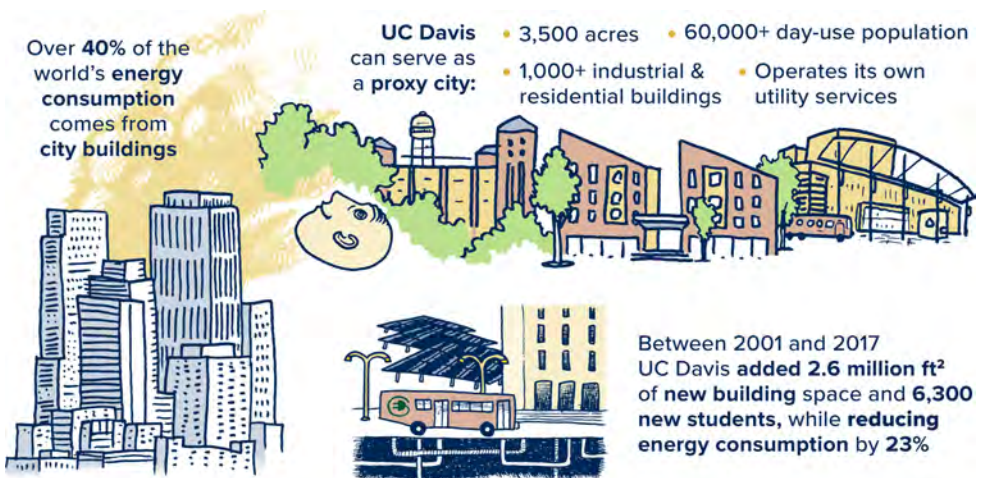
Goal 11: Facts and figures

- Half of humanity – 3.5 billion people – lives in cities today
- By 2030, almost 60 per cent of the world's population will live in urban areas
- 95 per cent of urban expansion in the next decades will take place in developing world
- 828 million people live in slums today and the number keeps rising
- The world's cities occupy just 3 per cent of the Earth's land, but account for 60-80 per cent of energy consumption and 75 per cent of carbon emissions
- Rapid urbanization is exerting pressure on fresh water supplies, sewage, the living environment, and public health
- But the high density of cities can bring efficiency gains and technological innovation while reducing resource and energy consumption



GOAL 11: Targets

- By 2030, ensure access for all to adequate, safe and affordable housing and basic services and upgrade slums
- By 2030, provide access to safe, affordable, accessible and sustainable transport systems for all, improving road safety, notably by expanding public transport, with special attention to the needs of those in vulnerable situations, women, children, persons with disabilities and older persons
- By 2030, enhance inclusive and sustainable urbanization and capacity for participatory, integrated and sustainable human settlement planning and management in all countries
- Strengthen efforts to protect and safeguard the world's cultural and natural heritage
- By 2030, significantly reduce the number of deaths and the number of people affected and substantially decrease the direct economic losses relative to global gross domestic product caused by disasters, including water-related disasters, with a focus on protecting the poor and people in vulnerable situations
- By 2030, reduce the adverse per capita environmental impact of cities, including by paying special attention to air quality and municipal and other waste management



GOAL 01: Targets

- By 2030, provide universal access to safe, inclusive and accessible, green and public spaces, in particular for women and children, older persons and persons with disabilities
- Support positive economic, social and environmental links between urban, peri-urban and rural areas by strengthening national and regional development planning
- By 2020, substantially increase the number of cities and human settlements adopting and implementing integrated policies and plans towards inclusion, resource efficiency, mitigation and adaptation to climate change, resilience to disasters, and develop and implement, in line with the Sendai Framework for Disaster Risk Reduction 2015-2030, holistic disaster risk management at all levels
- Support least developed countries, including through financial and technical assistance, in building sustainable and resilient buildings utilizing local materials

Some facts about cities

By 2050, it is expected that **66%** of the population in the world will be living in urban areas

Cities contribute to up to **70%** of the total greenhouse gas emissions.

Half the world's population will be online in **2018** and by the end 2018, **51.1%** of the population (3.82 billion people) will be using the internet



Of today's **28 mega-cities, 16** are located in Asia, **4** in Latin America, **3** each in Africa and Europe, and **2** in Northern America.

By 2030, the world is projected to have 41 mega-cities with more than 10 million inhabitants

Tokyo
Population 2030:
37 million

Delhi
Population 2030:
36 million

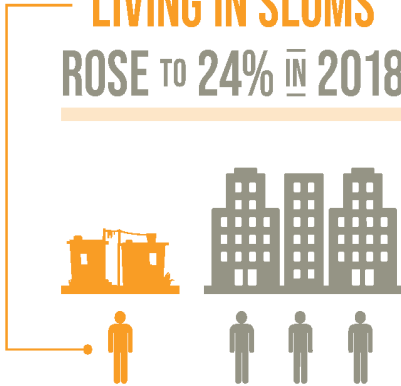
Mexico City
Population 2025:
24.6 million



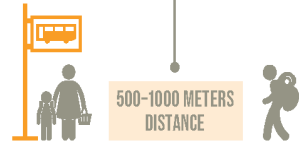
MAKE CITIES AND HUMAN SETTLEMENTS INCLUSIVE, SAFE, RESILIENT AND SUSTAINABLE

BEFORE COVID-19

SHARE OF URBAN POPULATION LIVING IN SLUMS ROSE TO 24% IN 2018



ONLY HALF
THE WORLD'S URBAN
POPULATION HAS
CONVENIENT ACCESS
TO PUBLIC TRANSPORT
(2019)



COVID-19 IMPLICATIONS



OVER 90%
OF COVID-19
CASES ARE IN
URBAN AREAS



AIR POLLUTION
CAUSED **4.2 MILLION**
PREMATURE DEATHS
IN 2016



47% OF POPULATION LIVE WITHIN 400 METRES
WALKING DISTANCE TO OPEN PUBLIC SPACES

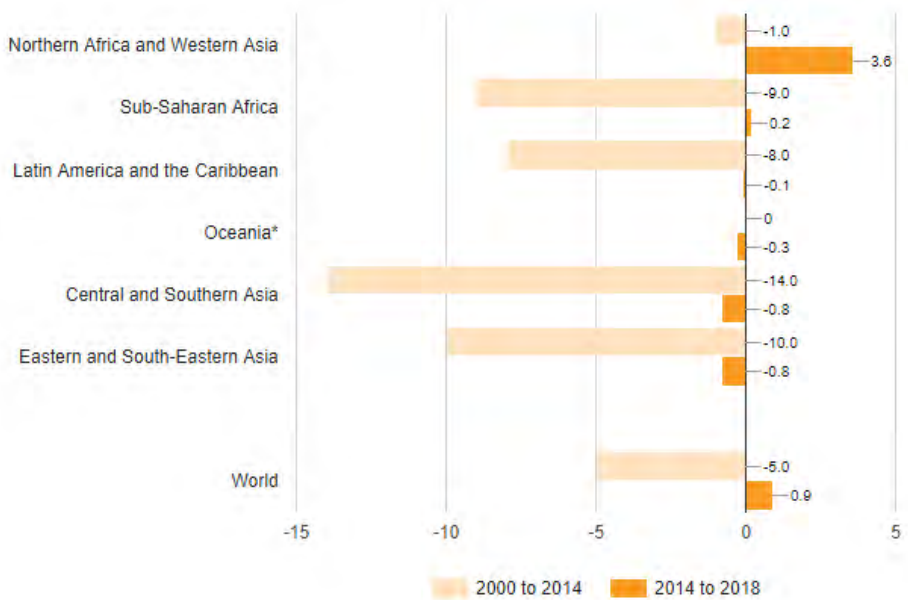


400M



The impacts of COVID-19 are exacerbating the vulnerability of slum dwellers and those living in informal settlements. Many of these urban residents already suffer from inadequate housing with limited or no access to basic infrastructure and services, including water, sanitation and waste management. Overcrowding of public transportation and limited health-care facilities have had a catastrophic effect on these communities, turning them into epicentres within epicentres.

Changes in the proportion of urban population living in slums in developing countries, 2000 to 2014 and 2014 to 2018 (percentage)



* Excludes Australia and New Zealand.

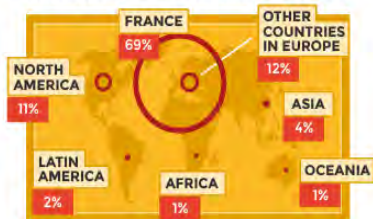
Concerted efforts by national governments, city authorities and other stakeholders led to a significant decline in the proportion of the urban population living in slums – from 28 per cent in 2000 to 23 per cent in 2014. Alarming, that trend has reversed as rapid urbanization outpaces the development of housing, infrastructure and services. The proportion of the urban population living in slums rose to 24 per cent in 2018, or over 1 billion people, due to increases in Northern Africa and Western Asia and sub-Saharan Africa.

City & Digital Life

HOW FRENCH STUDENTS
SEE THEIR LIVES IN THE CITY
OF TOMORROW.

WHERE DO THEY WANT TO LIVE?

The majority wishes to remain in France.

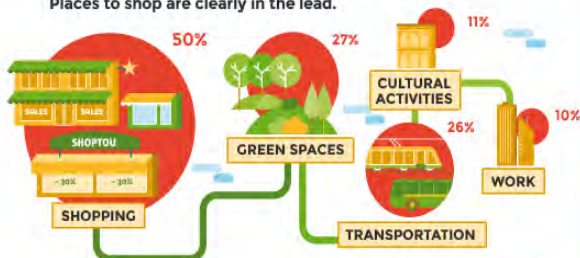


More than a third wants to live in a medium-size town.



WHAT DO THEY EXPECT FROM THEIR CITY?*

Places to shop are clearly in the lead.



59%
want the presence of companies specializing in digital services.



47%
want their city to be active on social networks.

BACK DOWNTOWN

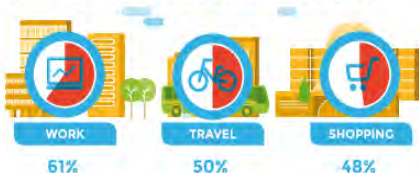
WHERE DO THEY WANT TO WORK?

WHERE DO THEY WANT TO SHOP?



HOW IMPORTANT IS THE DIGITAL WORLD?

For them, digital services will primarily impact:



But they have their reservations about the digital world:





Half of humanity -

3.5 BILLION PEOPLE – LIVES IN CITIES TODAY

5 billion are projected to live by 2030!

SDG 11: SUSTAINABLE CITIES

Co-funded by the
Erasmus+ Programme
of the European Union



You **ABLE**

11 SUSTAINABLE CITIES & COMMUNITIES



Share of urban population
 $\frac{1}{3}$ of total population

Global average: 54%



Urban air pollution among the highest in the region.

82% of urban population burn wood & charcoal for cooking

High levels of fine particles in the air: 33.6 g/m³



4.5%

$\frac{2}{3}$

of population growth in
Vientiane Capital caused
by net migration

Urban
population
growth
2005-2015



In Vientiane Capital, provision of
basic urban amenities is lagging
behind population growth

To meet national targets,
investments needed until
2020

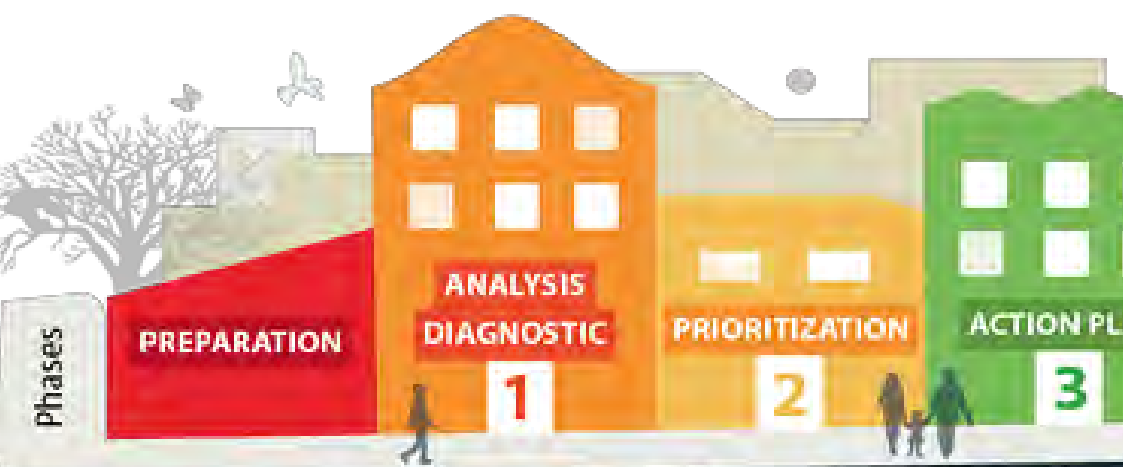
US\$ 19 m
for urban water supply

US\$ 12 m
for urban sanitation



Phases of a city

in **EM
SUS
CITY**

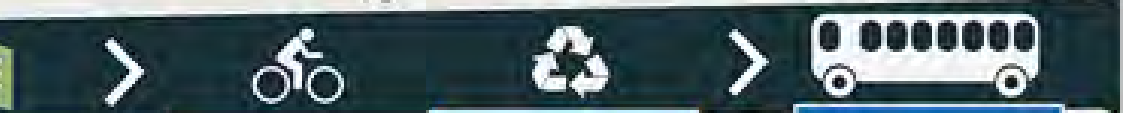


Activities	<ul style="list-style-type: none"> Initiate data collection Form work teams Identify stakeholders Hire technical experts 	<ul style="list-style-type: none"> First mission City overview Complete indicators Traffic light exercise Baseline studies 	<ul style="list-style-type: none"> Applying filters: <ul style="list-style-type: none"> Public opinion Economic cost Climate change Specialists Critical areas for the city's sustainability 	<ul style="list-style-type: none"> Formulating Action Plans Identified strategies Initial study Create detailed Action Plan Validate Action Plan
Deliverables	<ul style="list-style-type: none"> List of stakeholders and initial view of strengths and problem areas 	<ul style="list-style-type: none"> Set of indicators with traffic light analysis, comparisons with other cities and baseline studies 	<ul style="list-style-type: none"> List of prioritized areas and sectors 	<ul style="list-style-type: none"> High level Action Plan

CORE OF THE METHODOLOGY

© 2017 EM SUSTAINABILITY CONSULTING LTD. ALL RIGHTS RESERVED

EMERGING and SUSTAINABLE CITIES



<p>for</p> <p>ed</p>	<p>Financing studies in prioritized sectors: Feasibility Economic Engineering Environmental</p> <p>Prepare vertical cooperation agreement</p> <p>Set of actions with basic descriptions</p>	<p>Design and Implementation of a monitoring system</p> <p>Indicators for prioritized areas</p> <p>Citizen perception</p> <p>Topics of Interest</p> <p>Monitoring System</p>	<p>Action Plan Execution</p> <p>Projects ready for bidding and financing</p> <p>New public services and infrastructures</p>
----------------------	---	--	---

PRE-INVESTMENT + MONITORING

Various Transparency Services

Putting Urban Policies at the Heart of the Agenda





WHAT IS THE USE
OF A HOUSE
IF YOU DON'T HAVE
A DECENT PLANET
TO PUT IT ON?

- HENRY DAVID THOREAU

“This document has been prepared for the European Commission however it reflects the views only of the authors, and the Commission cannot be held responsible for any use which may be made of the information contained therein.”



Y **u** **ABLE**